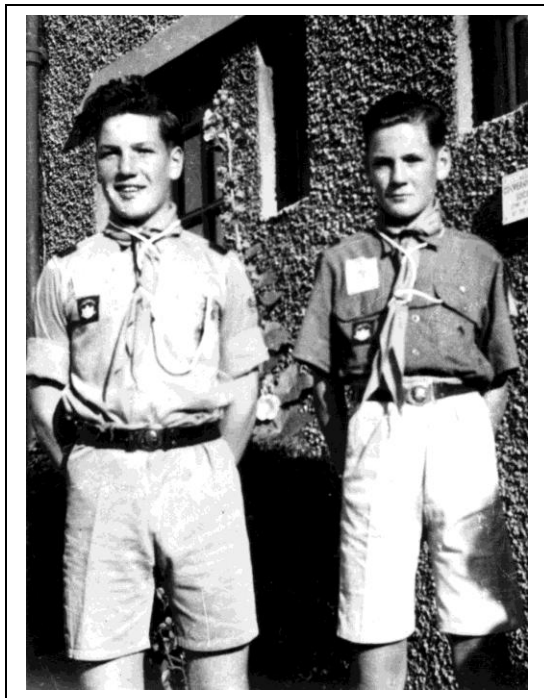


1st Penmaenmawr.

The 1st Penmaenmawr Scout Group was one of the first groups in the Conwy District Area with the earliest known registration date of 1913. It is believed to have continued uninterrupted until the late 1990's when the lack of adult leaders forced its closure. The group was closely associated with the Penmaenmawr quarries through both the owners and the work force. Colonel Derbyshire, the owner of the quarries, donated a scout headquarters which was then located on quarry owned land in October 1929. The building was always known as "The Roy Hall" in memory of one of Colonel Derbyshire's sons. This building continued to be in use until the group closed down and shortly afterwards vandals burnt it to the ground. During the 1920's and 30's there are references to a well established Rover Crew within the group.

Members of the 1st Penmaenmawr Scout Group visiting the 1st Welsh Scout Jamboree at Gwrych Castle Abergele 1948.



Dennis & Wynne Jones 1952

2nd Welsh Jamboree Haverfordwest 1952
Wyn Jones. Predur Parry. Dennis Jones.
Eirwyn Griffiths. Emyr Pritchard. Robert Davies.
Freddie Tharme.



1st Penmaenmawr Troop
BOY SCOUTS.

OPENING OF
NEW HUT

BY

LORD SWANSEA, M.V.O., D.S.O., D.L., J.P., T.D.,
CHIEF COMMISSIONER FOR WALES,

ON

Saturday, May 24th, 1930.

FRIDAY, MAY 23rd,

At 7-30 p.m.

Dinner and Fow Wow for Caernarvonshire
Scout and Cub Officers at the Grand
Hotel, Penmaenmawr, for the purpose
of meeting Lord Swansea, at the kind
invitation of W. Tipping, Esq., Assis-
tant County Commissioner.

E. Humphrey Owen, Printer, Penmaenmawr.

SATURDAY, MAY 24th.

9-30 a.m. Visit of Lord Swansea and Scout
Commissioners to the Penmaenmawr
Quarries, by courtesy of the Directors
of the Penmaenmawr & Welsh Granite
Co. Ltd.

2 p.m. Lord Swansea, M.V.O., D.S.O., D.L., J.P.,
T.D., received by Major J. R. Williams.

Short address by Chairman U.D.C. (Mrs.
O'Regan).

President of Local Association (Mrs.
Owen Owen) thanks the Donor of the
New Scout Hut.

Presentation of Badges, etc., by Lord
Swansea.

H. W. Darbishire, Esq., presents silver
key to Lord Swansea to open the Scout
Hut.

County Commissioner (W. Tipping, Esq.)
addresses a vote of thanks to the Donor
of the Hut.

Photograph of the late Col. C. H. Darbi-
shire to be Unveiled by the youngest
Cub and Scout.

Short Address by Rector of Llanfair-
fechan (Rev. Smith).

2-45 p.m. County Scout Rally in Ty Mawr Field.

Troop Competition for:—

- a. County Challenge Shield (if possible)
- b. Tipping Shield (Scouts).
- c. Tipping Shield (Cubs).
- d. Shield (Cubs).

5-0 p.m. Tea (provided by Penmaenmawr Local
Association).

5-30 p.m. Presentation of Shields.

Any Further Details from—

W. Cliffe, Hawarden Villa, Penmaenmawr.